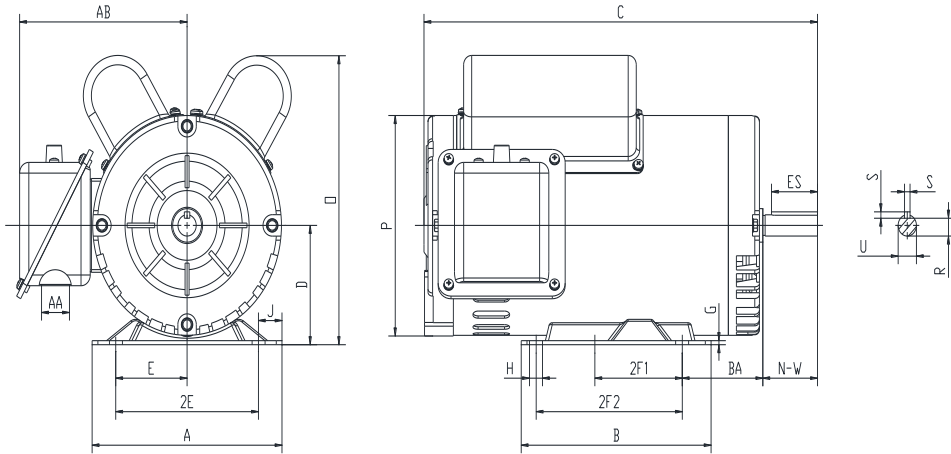




D56HZ5S2C-MO

GENERAL PURPOSE / COMPRESSOR DUTY ELECTRIC MOTOR
SINGLE PHASE - CAPACITOR START / CAPACITOR RUN
HIGH STARTING TORQUE
ROLLED STEEL CONSTRUCTION
OPEN DRIP PROOF



DIMENSIONS

| HP | RPM | Frame | MOUNTING | | | | | | | | | | | | | | |
|----|------|-------|----------|-----|------|-----|------|------|------|------|------|-----|-----|-----|-----|----|------|
| | | | A | B | C | D | G | H | J | E | 2E | 2F1 | 2F2 | O | P | T | BA |
| 5 | 3600 | 56HZ | 6.5 | 6.5 | 13.4 | 3.5 | 0.12 | 0.34 | 0.81 | 2.44 | 4.88 | 3 | 5 | 8.5 | 6.5 | NA | 2.75 |

| Shaft Extension, Key Set | | | | | | Conduit Box | | Bearings | | Mount |
|--------------------------|----|-------|-------|------|------|-------------|----|------------|------------|-------|
| U | V | R | S | ES | N-W | AA | AB | DE | ODE | |
| 0.875 | NA | 0.771 | 0.188 | 1.41 | 1.88 | 1.1 | 6 | 6205-2RZC3 | 6203-2RZC3 | F1 |

BEARING LUBRICATION: The bearings come lubricated with Mobil Polyrex EM Polyurea Grease.





D56HZ5S2C-MO

GENERAL PURPOSE / COMPRESSOR DUTY ELECTRIC MOTOR

SINGLE PHASE - CAPACITOR START / CAPACITOR RUN

HIGH STARTING TORQUE

ROLLED STEEL CONSTRUCTION


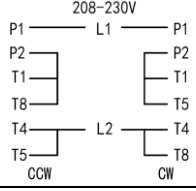



OPEN DRIP PROOF

PERFORMANCE DATA

| HP | RPM | Frame | Voltage | Frequency (Hz) | Full Load S.F. | Insulation Class | NEMA Design | Slip (%) | NEMA Code | Enclosure Type | IP Rating | Max. Ambient |
|----|------|-------|---------|----------------|----------------|------------------|-------------|----------|-----------|----------------|-----------|--------------|
| 5 | 3510 | 56HZ | 208-230 | 60 | 1.15 | F | L | 2.5 | F | ODP | 23 | 40 °C |

| Amps (230V) | | Efficiency (%) | | | Power Factor | | | Torque (ft-lb) | | | DE Bearing | ODE Bearing | Connection | Weight (lbs.) |
|-------------|-------|----------------|------|------|--------------|------|------|----------------|-------|-------|------------|-------------|--------------|---------------|
| FLA | LRA | 100% | 75% | 50% | 100% | 75% | 50% | FLT | LRT % | BDT % | | | | |
| 18.94 | 118.7 | 86.5 | 85.2 | 80.1 | 0.99 | 0.97 | 0.92 | 10.19 | 250 | 211 | 6205-2RZC3 | 6203-2RZC3 | 4 Lead/P1,P2 | 55.8 |

NAME PLATE

|  COMPRESSOR DUTY SINGLE PHASE AC ELECTRIC MOTOR HIGH STARTING TORQUE MANUAL OVERLOAD PROTECTION | | | |
|---|--------------|---------|-------------------|
| MODEL | D56HZ5S2C-MO | HP | 5 |
| FRAME | 56HZ | ENCL | ODP PH 1 |
| RPM | 3510 | CODE | F HZ 60 |
| DESIGN | L | CLASS | F S.F. 1.15 |
| EFFICIENCY | 86.5 | P.F. | 0.99 IP RATING 23 |
| DE BRG | 6205-2RZC3 | ODE BRG | 6203-2RZC3 |
| VOLT | 208-230 | LBS | 55.8 |
| AMPS | 20.94-18.94 | DUTY | CONT |
| S.F.AMPS | 25.7-21.8 | MAX AMB | 40 °C |
| CONNECTION | 4 Lead/P1,P2 | SER # | |
| 208-230V  | | | |
| Hernando, MS www.naemotors.com    | | | |

APPLICATIONS:

General purpose use on pumps, fans, conveyors, blowers, air compressors, refrigeration equipment, milling machines, tools, farm equipment, aeration equipment and other general purpose applications where contaminants are minimal.